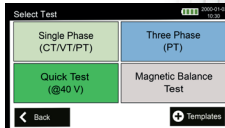
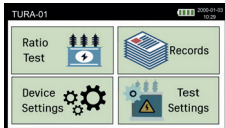




TURA-01 SERIES

100V Turns Ratio Tester



TURA-01 SERIES 100V TURNS RATIO TESTER

TURA-01 is designed to accurately measure the turns ratio of single-phase and three-phase transformers.

TURA-01 performs fast and accurate turns ratio measurements on current, voltage and power transformers using its user-friendly interface.

With market-leading accuracy, the TURA-01 has a very wide ratio measurement capability with an accuracy of 0.08 %.

Other features available on TURA-01 include the measure of core excitation current, phase angle, polarity, and ratio error.

TURA-01 instrument has a single-phase cable configuration, although users may still perform three-phase transformer tests by connecting cables for each phase one by one.

The instrument also contains a helpful list of connection diagrams for the various transformer configurations. The operator simply selects the one they need to be displayed.

Therefore, there is no need for an additional manual or diagrams to understand the cable connections for each vector group.

Selecting the right vector group is enough and device shows how to connect the cables to the transformer.

The TURA-01 instrument has a wide operating range for use on equipment such as high excitation current transformers to high power potential transformers in substations. The instrument can generate 1V, 4V, 10V, 40 V and 100 V AC test voltages.

The 4.3-inch colour touch screen is large enough to display all parameters requiring entry. It is also large enough to display all measurement results on a single screen. USB, Bluetooth (Option), and Flash Memory feature allow TURA-01 to control, record and store up to 100 test records.

With the HighTest Data Management Platform or a.k.a. (DMP Software), users may control the TURA-01 instrument and analyse the measured results on a PC.

If an immediate hard copy of the results is required the TURA-01 also allows for this via an embedded 2.25-inch printer.

Multi-language capability and user-friendly operation menu make it easy to control TURA-01, even by less trained staff. TURA-01 is a light, compact and rugged device with an IP protection class of IP67, (case closed).



DEVICE HIGHLIGHTS



Single-phase & three-phase ratio measurement

With TURA-01's single-phase cable configuration, users can measure turns ratio of single-phase transformers and three-phase transformers.



Built-in Rechargeable Li-Ion Smart Battery

TURA-01 comes with a 14.4V Li-Ion smart battery which enables you to make tests while on field. TURA-01 works on both main power and consuming battery power.



4.3-inch TFT Colour Touch Screen

TURA-01 is built-in with a 4.3-inch TFT Colour Touch Screen which is visible under both bright sunlight and dim lit environment.



2.25-inch Built-in Thermal printer

TURA-01's built-in thermal printer let you print the results immediately during field test.

FEATURES

- Turns Ratio Measurement (Single-phase and three-phase measurement)
- Ranges from 0.8 to 33,000 Ratio Measurement
- High Accuracy (0.08 %)
- 1V, 4V, 10V, 40 V and 100 V AC Test Voltages
- Ratio Error Measurement
- Excitation current, phase angle, polarity measurement
- Built-in Battery & Printer
- Internal memory, USB Flash Drive
- PC control via USB cable
- Optional Bluetooth control and communication
- 4.3-inch colour touch display





TECHNICAL SPECIFICATIONS

Measurement Parameters	Turns Ratio Measurement, Excitation Current, Phase Angle, Polarity, Ratio Error (%)		
Ratio Measurement Modes	CT Mode, PT Mode, Power Transformer (Single-Phase and Three-Phase)		
Test Voltages	CT Mode: 1 V and 4 V ; PT Mode: 1, 4, 10, 40 & 100 V		
Ratio Range	0.8 – 33,000		
Accuracy	Mode	Ratio	Accuracy
	CT Mode (1V -4 V)	0.8-399 400-4000	0.08 % 0.1 %
	PT Mode(10 V- 100 V)	0.8-5000 5001-12000 12001-33000	0.08 % 0.15 % 0.5 %
Phase Angle Measurement	0-360 degrees, ± 0.2 degrees (± 1 digit)		
Excitation Current	2 A, 2 % of reading (± 1 mA)		
Power Supply	100-240V AC, 47/63 Hz		
Built-in Battery	Yes, 14.4 V 3.45 Ah		
Memory	Up to 100 records (includes up to 25 tap results)		
Printer	2.25-inch built-in printer		
Communication	USB 2.0/1.1 Standard-A, USB 2.0/1.1 Standard-B, Bluetooth (Model: TURA-01 BLUE)		
PC Software	DMP Software		
Display	4.3-inch colour touch display		
Dimensions	12.5" x 10.1" x 6.0" (318 mm x 257 mm x 152 mm)		
Weight	3.8 kg		
Temperature	Working: -10 °C to +60 °C ; Storage: -30 °C to +70 °C		
Humidity	95% RH Non-condensing		
Protection Class	IP67 (case closed)		
Included in the package	Power Cable, Ground Cable, 5 m Test Cable Set, USB Cable, Printer Paper (x2), USB flash drive, Instruction Manual (Soft Copy), DMP Software, Soft Carrying Case		
Options	Hard Carry Case, Bluetooth (factory install option)		

Specifications are valid at/under 25 °C temperature. *Content subject to change without notice.

ORDERING INFORMATION

TURA-01  

100V Transformer Turns Ratio Tester with Built-in Printer & Battery

TURA-01 BLUE   

100V Transformer Turns Ratio Tester with Built-in Printer, Battery & Bluetooth



STANDARD ACCESSORIES



5m Measurement Cable Set
Part: MCS-TURA01-HC
Ordering Code: 10150



2.5m Grounding Cable & Crocodile Clip
Part: GC-01
Ordering Code: 90120



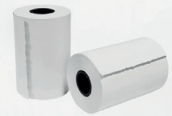
1.8m Power Cord (EU/US/UK)
Part: PWC-01(EU)/02 (US)/03 (UK)
Ordering Code: 90110/90113/90115



1.8m USB Cable
Part: USB-01
Ordering Code: 90130



32 GB USB Flash
Part: USB-02
Ordering Code: 90130

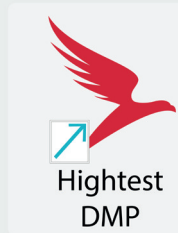


2 pcs Thermal Printer Paper Rolls
Part: PP-57
Ordering Code: 90150



1 pcs Soft Carry Bag
Part: SCB-01
Ordering Code: 90160

PC SOFTWARE



Hightest DMP Software

OPTIONAL ACCESSORIES



10m Measurement Cable Set
Part: CMCS10-TURA01
Ordering Code: 10151



10m Extension Cable
Part: ECS-TURA01
Ordering Code: 10175



Hard Carry Case
Part: HCB-01
Ordering Code: 90991

CONTACT US

HIGHTEST TECHNOLOGY LIMITED

Unit 14, First Quarter, Blenheim Road,
Epsom, Surrey, KT19 9QN, United Kingdom.

Website: www.hightest.co.uk

Email: info@hightest.co.uk | sales@hightest.co.uk

Phone: +44 2039 002710

Distributor Info